

Block 309; Lots 1 & 1.01	BCSM	2/13/2020
Revisions	Auth.	Date

General Notes and Data Sources:

This Geographic Information System (GIS) Zoning Map is for demonstration purposes only, any use of this product with respect to accuracy and precision shall be the sole responsibility of the end user.

The areas, boundaries and details, shown on this Zoning Map, are referenced, in part, from ground surveys, aerial surveys and recorded plans, tax assessment maps and documents, and are to be used for zone designation boundary purposes only. Zoning information taken from "Mount Laurel Township Zoning Map" dated July 2009.

Zoning district boundaries are intended to follow street centerlines, railroad rights-of-way, streams, and lot lines unless otherwise indicated by a dimension on the zoning map.

This map was created, in part, utilizing parcel data provided by Mount Laurel Township's current municipal tax maps approved: 1989, last revised: 2008.

This Zoning Map was adopted as of Ordinance 2019-26 on 6/24/2019.

This map was developed using digital data from the Burlington County Geographic Information System. This map is a secondary product and has not been verified by the County of Burlington. It is not authorized by the County of Burlington.

Additional GIS resource data and imagery data was provided by the New Jersey Geographic Information Network. The (NJGIN) data was obtained and provided by the New Jersey Geographic Information Network (NJGIN): https://gin.state.nj.us/NJ_NJGINExplorer/index.jsp Last updated 9/2019. This secondary product has not been verified by (NJGIN) and is not state-authorized.

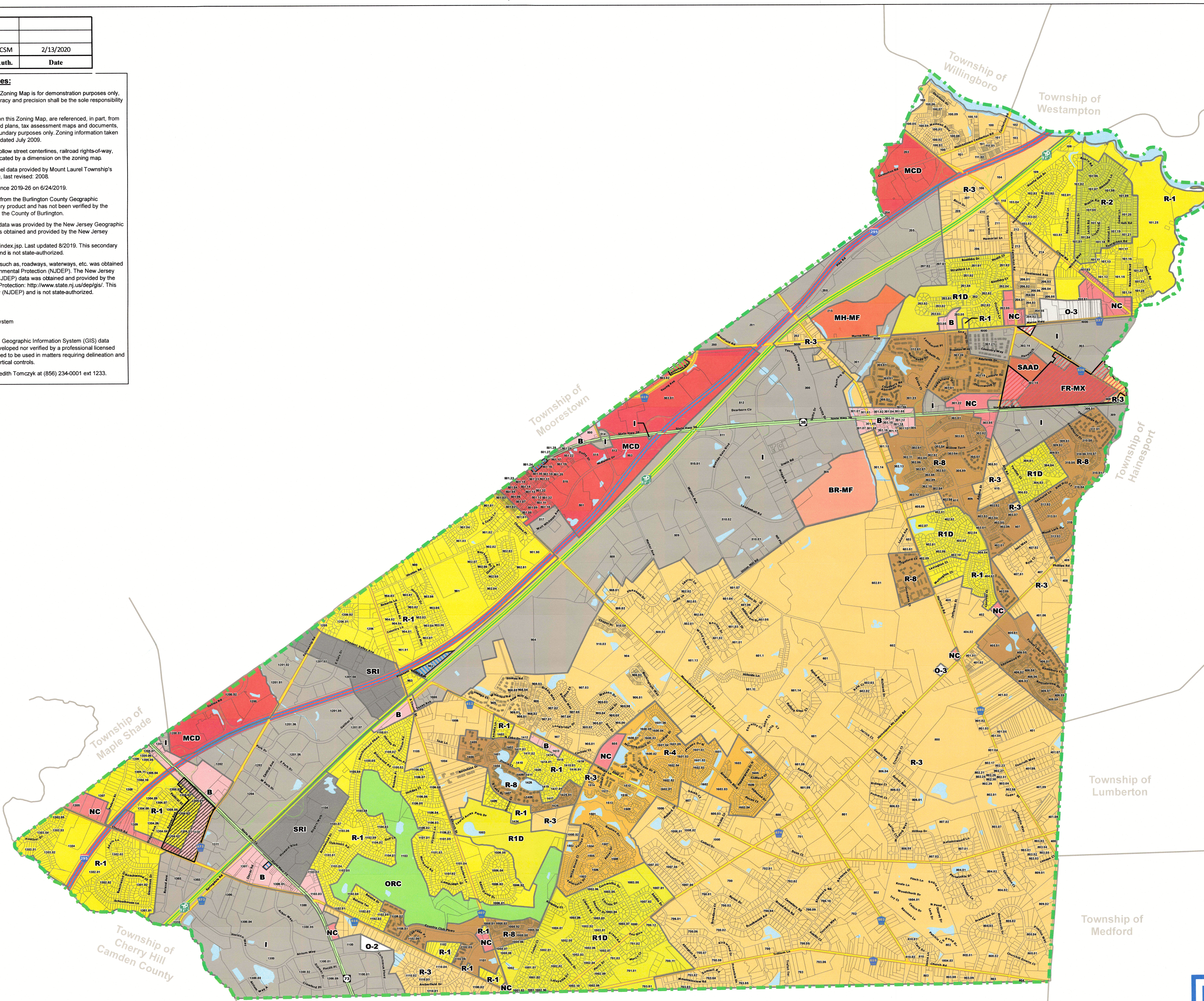
Additional cadastral feature mapping data, such as, roadways, waterways, etc. was obtained from the New Jersey Department of Environmental Protection (NJDEP), The New Jersey Department of Environmental Protection (NJDEP) data was obtained and provided by the New Jersey Department of Environmental Protection: <http://www.state.nj.us/dep/gis/>. This secondary product has not been verified by (NJDEP) and is not state-authorized.

All positions are based on the following:

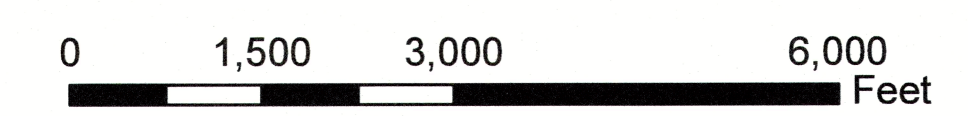
- NAD 83 (horizontal datum)
- New Jersey State Plane Coordinate System
- English units (feet)

The geodetic accuracy and precision of the Geographic Information System (GIS) data contained in this mapping has not been developed nor verified by a professional licensed land surveyor and shall not be intended to be used in matters requiring delineation and location of true ground horizontal and/or vertical controls.

For further information, please contact Meredith Tomczyk at (856) 234-0001 ext 1233.



- Legend**
- Municipal Boundary
 - Surrounding Municipality Borders
 - Right-of-Way/Block lines
 - Interstate
 - Highway Authority Route
 - State Highway
 - County Route
 - Ramp
 - Parcels
 - Water Bodies
- ZONING DESIGNATIONS**
- B Business
 - NC Neighborhood Commercial
 - MCD Major Commercial District
 - FR-MX Fostertown Road Mixed-Use District
 - O-2 Office
 - O-3 Office Residential
 - I Industry
 - SRI Specially Restricted Industry
 - R-1 Residential
 - R1D Residential
 - R-2 Residential
 - R-3 Residential
 - R-4 P.A.R.C.
 - R-8 Residential
 - BR-MF Briggs Road Multifamily District
 - MH-MF Marne Highway Multifamily District
 - SAAD Senior Affordable Apartments District
 - ORC Outdoor Recreation Conservation
 - Non-Condensation Area in Need of Redevelopment Area
 - Rt 38, Arc Road & Fostertown Road Redevelopment Area
 - Fellowship Redevelopment Area
 - Centerton Road Rehabilitation Area



ZONING MAP
TOWNSHIP OF MOUNT LAUREL
 BURLINGTON COUNTY, NEW JERSEY
 SCALE: 1" = 1,500' DATE: 2/13/2020

REMINGTON & VERNICK ENGINEERS
 THE PRESIDENTIAL CENTER, LINCOLN BUILDING, SUITE 600
 101 ROUTE 130, CHERRY HILL, NJ 08077
 (856) 303-3245, (856) 303-3249 WWW.RVE.COM
 Certificate of Authority: E-24 GA 2803300
 -ENGINEERING EXCELLENCE-

JOSEPH M. PETRONGOLO PROFESSIONAL PLANNER LIC. NO. 33L0052510